

## RetroN 5 Factory Reset Instructions

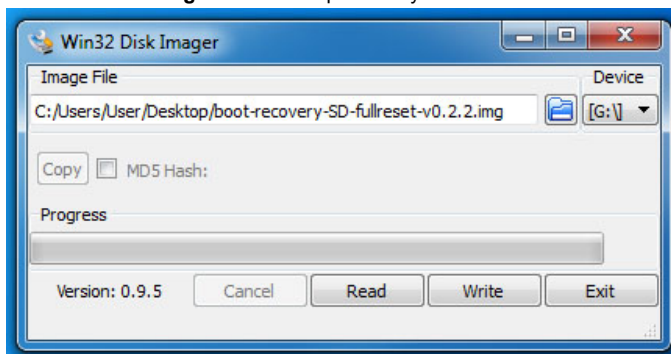
**WARNING: This procedure will PERMANENTLY ERASE the contents of both your RetroN 5 and the SD card you use for the procedure. If you have any important data on either, be sure to back it up first.**

The Following instructions are specific for a Windows PC, for instructions on how to create a Factory Reset SD card image using Linux please go here <http://www.retron5.in/node/7>

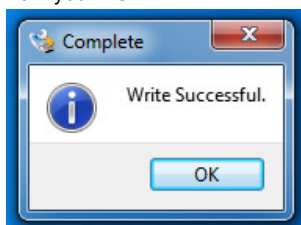
For instructions on how to use OSX please go here <http://www.retron5.in/node/10>

RetroN 5 may be restored to its factory state by performing the following procedure. You will need an SD card for this, and during the procedure all current data on the SD card will be erased. Perform the steps as follows:

1. Obtain a spare SD card with a capacity of at least 512MB
2. Download and install the **Win32 Disk Imager** application from here: <http://sourceforge.net/projects/win32diskimager/files/latest/download>
3. Download the RetroN 5 v0.2.2 firmware "full reset" image from here: <http://www.retron5.in/downloads/boot-recovery-SD-fullreset-v0.2.2.zip>
4. Extract the contents of the attached .zip file to obtain **boot-recovery-SD-fullreset-v0.2.2.img**
5. Connect the SD card to PC and launch the **Win32 Disk Imager** application (some versions of Windows will need to **Run as administrator**)
6. In the imager app, select the device/drive corresponding to the SD card (ie G:\), **and MAKE SURE IT IS THE CORRECT DEVICE - you don't want to erase the wrong HDD**. If you have any other removable devices connected to your PC, we advise you to remove all except for the RetroN 5 recovery SD card before starting this procedure; then there will be no way to accidentally erase the wrong device. For **image file**, navigate to the **boot-recovery-SD-fullreset-v0.2.2.img** file extracted previously

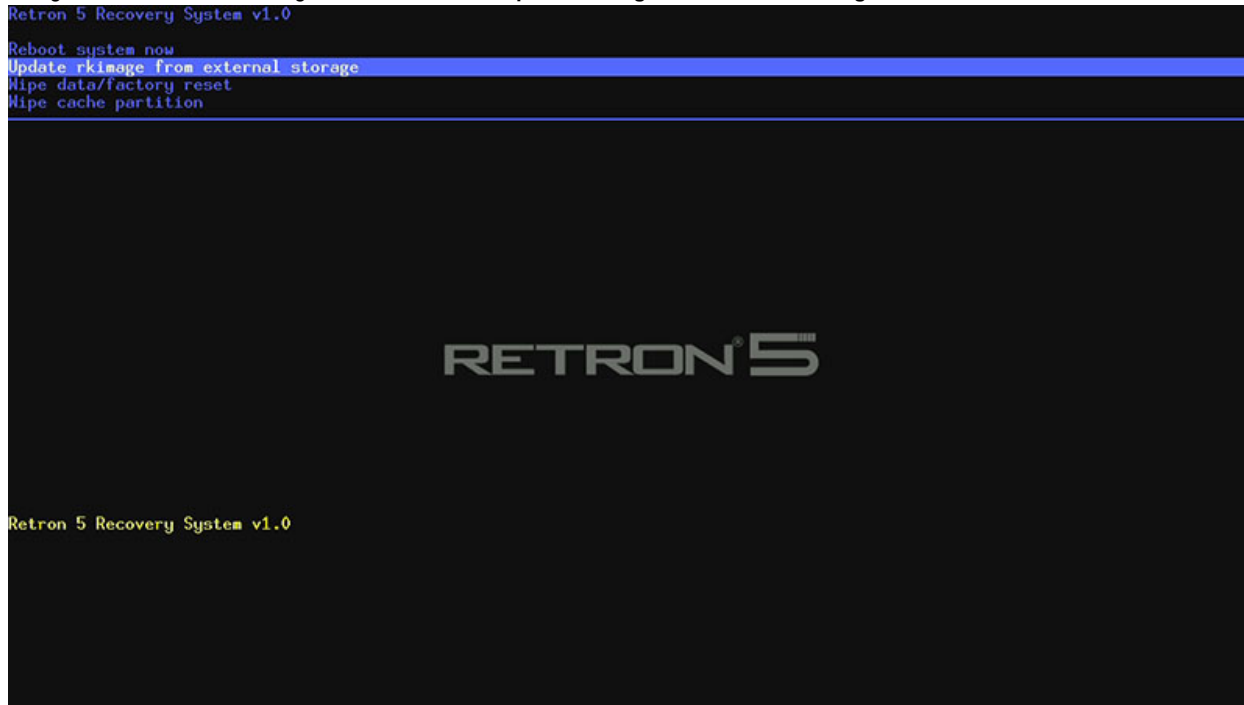


7. Select "Write", then "Yes" to confirm. Once the write is successful, use windows "Safely remove hardware" to eject the SD then physically remove the SD from your PC



8. Make sure the RetroN 5 unit is powered off. Insert the SD card into the RetroN 5 unit, then power it on. It should at this point boot into **RetroN 5 Recovery System**

9. Using a wired controller to navigate the menu, select **Update rkimage from external storage**



10. The software will begin to update your system firmware. When this process has completed you will be returned to the menu screen, and you may see some yellow text indicating that the update has completed



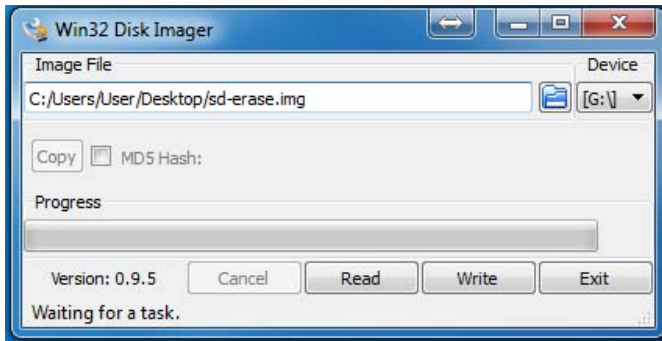
11. Once again using a wired controller, select **Wipe data/factory reset** and then on the following screen, select **Yes -- delete all user data**



12. You will see yellow text indicating that the data wipe is complete, and you will be returned to the menu. At this point, **REMOVE THE SD CARD** from your Retron 5 unit
13. Use your wired controller to select **Reboot system now**



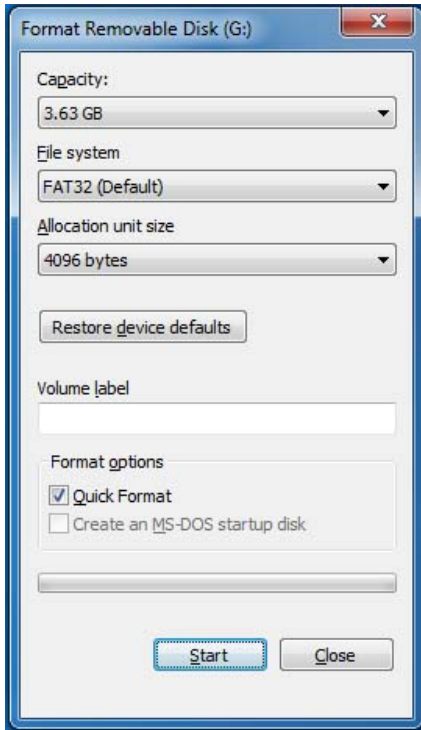
14. The unit will restart and should now be in working order. If problems persist, please contact our technical support staff.
15. **You must now perform a full format on your SD card in order to remove the Retron 5 recovery mode data from it; failure to do so will result in recovery mode being activated if the unit is booted with the SD inserted.**
16. Download the "SD erase" image from here: <http://www.retron5.in/downloads/sd-erase.img>
17. Connect the SD card to PC and launch the **Win32 Disk Imager** application, as you did previously for step 5
18. In the imager app, select the device/drive corresponding to the SD card (ie G:\), exactly as you did previously for step 6. For **image file**, navigate to the **sd-erase.img** file downloaded previously



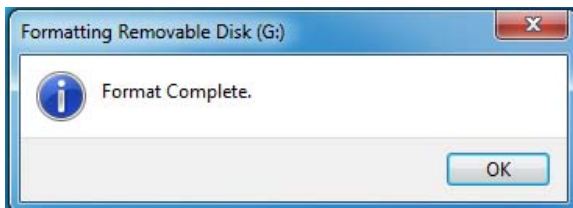
19. Select "Write", then "Yes" to confirm. Once the write is successful, use windows "Safely remove hardware" to eject the SD then physically remove the SD from your PC
20. After the SD has been removed from the PC, **re-connected it back to the PC**
21. You should see a dialog like this, saying that the SD card must be formatted. Click **Format disk**



22. You will see a dialog like this. Ensure that **Quick Format** is ticked, and click **Format**



23. The SD card will be formatted. Once this has completed, use windows "Safely remove hardware" to eject the SD then physically remove the SD from your PC. **Your SD card has now been reverted to a usable state.**





All Rights Reserved © 2013 HYPERKIN, INC.